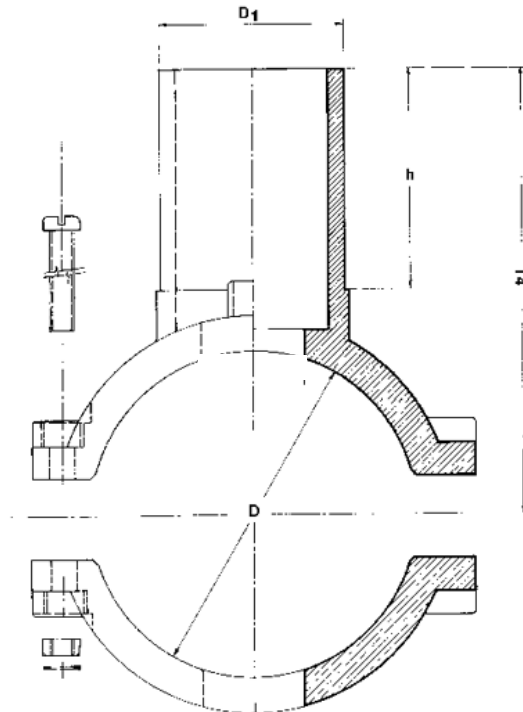




**Opaska do zgrzewania elektrooporowego (nr katalogowy 141)  
 (TECHNIMA)**



| D<br>[mm] | sdr | D <sub>1</sub> | T <sub>4</sub><br>[mm] | h  | Masa<br>[kg] |
|-----------|-----|----------------|------------------------|----|--------------|
| 63        | 11  | 32/25/20       | 159                    | 49 | 0,43         |
| 75        | 11  | 32/25/20       |                        |    |              |
| 90        | 11  | 32/25/20       | 166                    | 49 | 0,70         |
|           | 11  | 40/50/63       | 155                    | 74 | 0,70         |
| 110       | 11  | 32/25/20       | 140                    | 58 | 0,83         |
|           | 11  | 40/50/63       | 150                    | 74 | 0,90         |
| 125       | 11  | 32/25/20       | 148                    | 58 | 0,88         |
|           | 11  | 40/50/63       | 158                    | 74 | 0,95         |
| 140       | 11  | 32/25/20       |                        |    |              |
| 160       | 11  | 32/25/20       | 210                    | 49 | 1,35         |
|           | 11  | 40/50/63       | 195                    | 74 | 1,45         |
| 200       | 11  | 32/25/20       | 227                    | 49 | 1,60         |
|           | 11  | 40/50/63       | 215                    | 74 | 1,71         |
| 225       | 11  | 32/25/20       | 235                    | 49 | 1,65         |
|           | 11  | 40/50/63       | 223                    | 74 | 1,75         |
| 250       | 11  | 32/25/20       |                        |    |              |
| 280       | 11  | 40/50/63       |                        |    |              |
| 315 (*)   | 11  | 32/25/20       | 245                    | 49 | 0,63         |
|           | 11  | 40/50/63       | 274                    | 74 | 0,73         |
| 355 (*)   | 11  | 32/25/20       | 265                    | 49 | 0,63         |
|           | 11  | 40/50/63       | 294                    | 74 | 0,73         |

(\*) – Wykonanie z pasami zamiast obejmy dolnej z PE